

## Ku-ring-gai is also of heritage significance for:

- The evidence of its rich history and all its sequential layers - from Aboriginal occupation, very early timbergetting, the long period of relative isolation from built suburbia, orcharding and farming followed by the rapid growth of suburban development in response to elevated topography, “clean air” and the establishment of the railway.
- The evidence offered by its built landscape and garden design incorporating a variety of horticultural styles, and in harmony with the natural landscape, like those at Swain Gardens, Bobbin Head, large estate private gardens, the gardens at railway stations and well-designed gardens of cultivated botanical specimens such as Eryldene and the Ku-ring-gai Wildflower Garden.

Photographs: ©Jennifer Harvey



Photographs: Ku-ring-gai Historical Society Inc

## Translated Extract Chinese (simple)

文化遗产重要性的说明

- Ku-ring-gai 的文化遗产是由精致的本地建筑与本土森林、奇异的苗圃和园林风景罕见的融合而构成。
- Ku-ring-gai 的文化遗产也是国家和州的文化遗产，因为它有着二十世纪建筑物杰出的分布范围和质量，它体现了战后城市规划和自然资源保护哲学，它保存了原始黑树桩，蓝桉树森林和林区的残余。

## Chinese (traditional)

文化遺?重要性的?明

- Ku-ring-gai 的文化遺?是由精緻的本地建築與本土森林、奇異的苗圃和園林風景罕見的融合而構成。
- Ku-ring-gai 的文化遺?也是國家和州的文化遺?，因為它有著二十世紀建築物杰出的分佈範圍和質量，它體現了戰後城市規劃和自然資源保護哲學，它保存了原始黑樹樁，藍?樹森林和林區的殘餘。

## Japanese

クリンガイの歴史的財産について

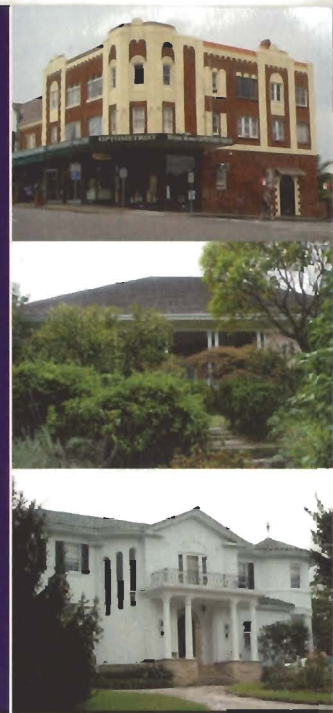
- クリンガイは、オーストラリアンスタイルの美しい建物が原生林や外来植物の景観の中に溶け込むといった、独特な雰囲気を醸し出しています。これはこの町の歴史的財産の一つとも言えます。
- クリンガイは、優れた質の20世紀建築物が多くある上、戦後の都市計画が非常によく反映されています。また、自然保護の哲学により、ユーカリ原生林も数多く残されています。そのため、ニューサウスウェールズ州だけでなく、オーストラリアにとっても非常に歴史的価値の高い町として認められています。

## Korean

문화 유산으로서의 중요성에 관한 설명

- 쿠링가이 지역의 유산으로는 원산의 삼림과 이국적인 조림 및 정원의 풍경 속에 훌륭한 주택이 보기 드물게 조화를 이루고 있는 것들을 들 수 있습니다.
- 구링가이(Ku-ring-gai)의 유산은 고유의 토종 숲과 이국적인 식물 및 정원의 풍경 안에 좀처럼 보기 힘든 뛰어난 주거 건축이 한 데 어우러져서 이루어져 있습니다.

Ku-ring-gai Council  
818 Pacific Highway, Gordon 2072  
Ph: (02) 9424 0888  
Email: [kmc@kmc.nsw.gov.au](mailto:kmc@kmc.nsw.gov.au)  
[www.kmc.nsw.gov.au](http://www.kmc.nsw.gov.au)



# A Statement of Heritage Significance



A STATEMENT BY KU-RING-GAI COUNCIL



# Statement of Heritage Significance

The heritage of Ku-ring-gai comprises a rare blend of fine domestic architecture within a landscape of indigenous forests and exotic plantings and gardens.



## **Ku-ring-gai as a whole is of national and state heritage significance because of:**

- The outstanding quantity, quality, depth and range of its twentieth century architecture. It contains houses designed by many of Australia's prominent twentieth century architects which have influenced the mainstream of Australian domestic architecture nationally including John Sulman, Howard Joseland, Hardy Wilson, Leslie Wilkinson and Harry Seidler.
- The evidence it provides of twentieth century town planning and conservation philosophies - the segregation of residential areas from other urban uses, subdivision patterns which reflect a range of suburban aspirations, the use of residential district proclamations to create and retain domestic environmental amenity, street tree planting and post-war neighbourhood planning.
- The railway, the presence of which demonstrates the bargaining power of public works and services in gaining votes for federation.

## **Ku-ring-gai is of regional significance for:**

- The evidence it retains in its surrounding national parks, along its creek lines, and in its public and private gardens, of remnants of the original Blackbutt and Blue Gum forests and associated woodlands, understoreys and dependent fauna - a resource of wide-ranging scientific research potential.
- Its coherent aesthetic values resulting from a combination of elevated locations, good soils, large trees, extended views, fine architecture and established gardens. These values have inspired artists like Grace Cossington Smith and Lionel Lindsay, visionaries like John Sulman and JJC Bradfield and writers like Ethel Turner, to honour Ku-ring-gai with their works.

- The technical and design innovation in its buildings and gardens. These demonstrate some of the earliest examples of Australia's first school of architecture at Sydney University, some of the earliest use of cavity walls, and Marseilles tiles and innovative landscape designs of renowned exponents such as Edna Walling, Paul Sorensen and Jocelyn Brown.

*Ku-ring-gai Council adopted this statement on 9 March 2004.  
It should be read in conjunction with  
The Character of Ku-ring-gai.*

